

MAEDAMC285 (2.82t x 1.4m)



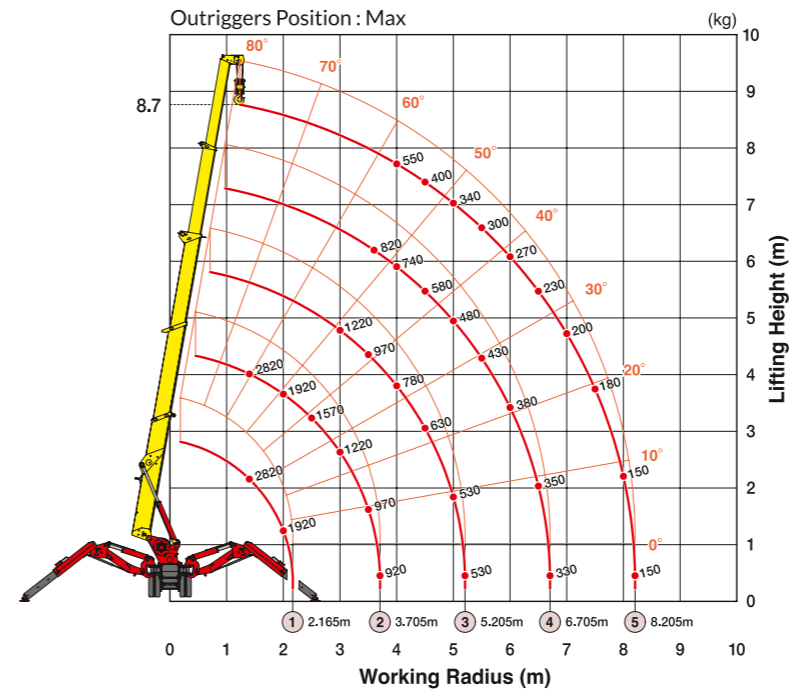
- 2.82 Ton Max Capacity
- 8.7m Max Working Height
- Slim Body Width (750mm)
- Low Ground Pressure
- Programmable Moment Limiter
- Tilt Sensor/Alarm
- Remote Control

Crane Specifications

Crane capacity	capacity:	2.82 t x 1.4m
Max working radius	max:	8.205m x 150kg
Max lifting height	approx:	8.7m x 550kg
Dimensions	folded:	2825mm x 750mm x 1440mm (electric 3390mm x 750mm x 1470mm)
Weight	unladen:	1960kg (standard) 2120kg (electric)
Hook speed	max:	8m / min. (4 falls, 3rd layer)
Single Line Speed	max:	32m / min. (3rd layer)
Hoist Rope	Type:	IWRC 6 x Fi (29) Ø 7mm x 48m
Telescopic System	Boom length:	2.535m - 8.575m
	Telescoping speed:	6.04m / 22 sec
	Boom type:	Fully automatic 5 section pentagonal telescopic
Boom Hoist System	Hoist angle / speed:	0° - 80° / 14 sec
Slew System	Slew angle / speed:	360° continuous / 1.0 rpm
Outrigger System	Type	4 Multi position box type. Hydraulic cylinders
	Maximum extended dimensions	(L) 4580mm x (Fro) 4530mm x (Rear) 3810mm
Traction System	Drive	Hydrostatic type, stepless forward and reverse
	Travel speed	0 - 2.2 km/h
	Gradability	20°
	Ground length x width	975mm x 200mm (Track dimensions)
	Ground pressure	0.45 kgf / cm²
Engine	Type	2 cylinder water cooled diesel
	Fuel tank capacity	Diesel / 12L
Standard Equipment		Working light, hour-meter, 4-fall hook block, black rubber tracks, moment limiter, hydraulic safety valves, level, wire rope latch, machine body inclination alarm, EMO switch, working status lamp, overwind protection and cable remote control.
Optional Equipment		White rubber tracks, single fall hook, two fall hook, searcher hook, radio remote control and electric 415v option.



Working Range



First Stage

FIRST STAGE EXTENDED 2.53m/4.075m BOOM LENGTH

Working radius m	<1.4	1.5	2	2.5	3	3.5	3.7
Max extended kg	2820	2520	1920	1570	1220	970	920
Min extended kg	1720	1720	1070	630	520	390	350

Second Stage

SECOND STAGE EXTENDED 5.575m BOOM LENGTH

Working radius m	<3	3.5	4	4.5	5	5.2
Max extended kg	1220	970	780	630	530	530
Min extended kg	510	410	330	280	200	200

Third Stage

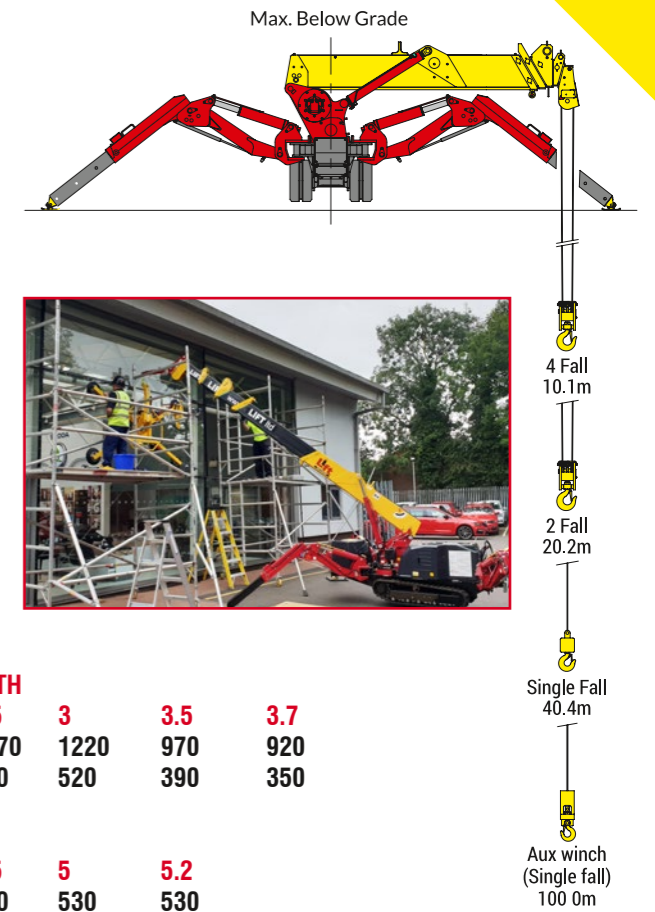
THIRD STAGE EXTENDED 7.075m BOOM LENGTH

Working radius m	<3.6	4	4.5	5	5.5	6	6.5	6.7
Max extended kg	820	740	580	480	430	380	350	330
Min extended kg	400	330	280	230	180	160	130	120

Fourth Stage

FOURTH STAGE EXTENDED 8.575m BOOM LENGTH

Working radius m	<4	4.5	5	5.5	6	6.5	7	7.5	8	8.2
Max extended kg	550	400	340	300	270	230	200	180	150	150
Min extended kg	330	280	230	180	160	130	100	80	70	60



Dimensions

